

SCEN[®]
Electronic Manufacturing Service



Ethical Innovation for Future Generation

WWW.SCEN.IT

HISTORY

Providing innovative customized solutions

After 20 years of experience in engineering & manufacturing service for electronics and research, in 2006 the co-founders Bertocchi Diego, Donzello Federico and Illy Francesco, in their native town Trieste, established SCEN based on a strong ethical-innovative look oriented towards future generations.

Located in a strategic area, in the middle of enlarged Europe and on the Silk Road, Trieste is called “The city of Science” for the large number of research and development laboratories.

In this area, our synergic spirit has found the ideal environment to offer and find innovative solutions to production and project problems.

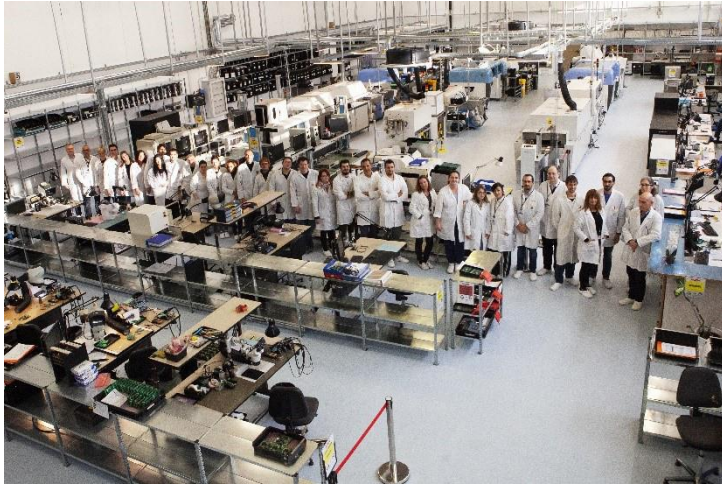
SCEN started bringing together in a single working team an extraordinary know-how coming from other 9.000 production and project groups.

SCEN[®]



SERVICE ALONG THE SUPPLY CHAIN

From training and design to finished products



SCEN is EMS/ODM specialized in providing “turn key” for prototype “just in time”, industrialization and production of PCBA hi-tech with micro electronic and mechanical components.

This experience, combined with continuous investment in equipment of diagnosis and control of the productive process, has enabled the achievement of a high-level quality.

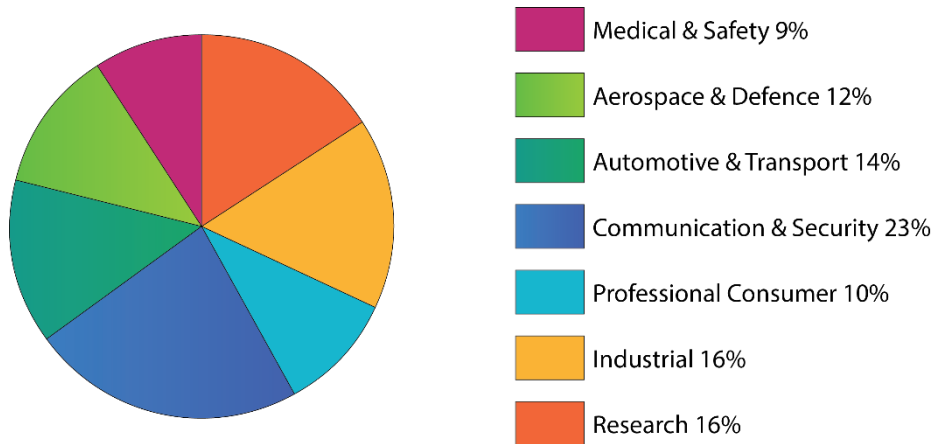
The service provided to our customers is complete with Life cycle and Quality management:

- Training and R&S
- Product development through Design or Redesign.
- Supply chain management.
- Expert Prototyping, industrialization and process engineering.
- Production with dedicated lines, advanced equipment and tests.
- Pre-certification test and certification assistance.
- Logistics distribution and after-sales service.

MARKETS AND APPLICATIONS

Service for constructive collaboration with Formation and Development Institutions, University, Electronic & Mechanical Designer, Start Up, PMI, Industry and Multinationals

Product Application



- **MEDICAL & SAFETY**
- **AEROSPACE & DEFENCE**
- **AUTOMOTIVE & TRANSPORT**
- **COMMUNICATION & SECURITY**
- **PROFESSIONAL CONSUMER**
- **INDUSTRIAL**
- **RESEARCH**

Laser, Optical, Intelligent implants, Medical Systems and Research visual disability.

Minisatellites, Defense and Intelligence.

Communication, On board systems, Electronic ctrl Units on wheel, track, sea and air.

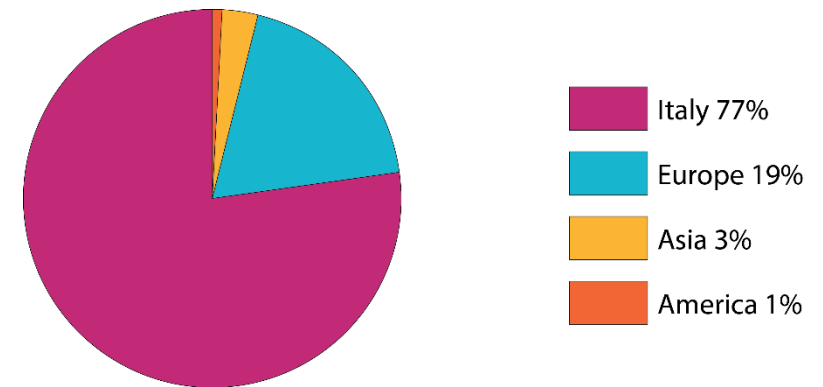
Digital Signage, In store radio, IoT, M2M module and Security systems.

Smart system, Luxury Coffee Machine, Led Lighting on Retail, Design, H.C.L., UVGI

Automation, Energy Control, Telecom and Security sensor.

Collaboration with International Scientific Research and Development Institutions.

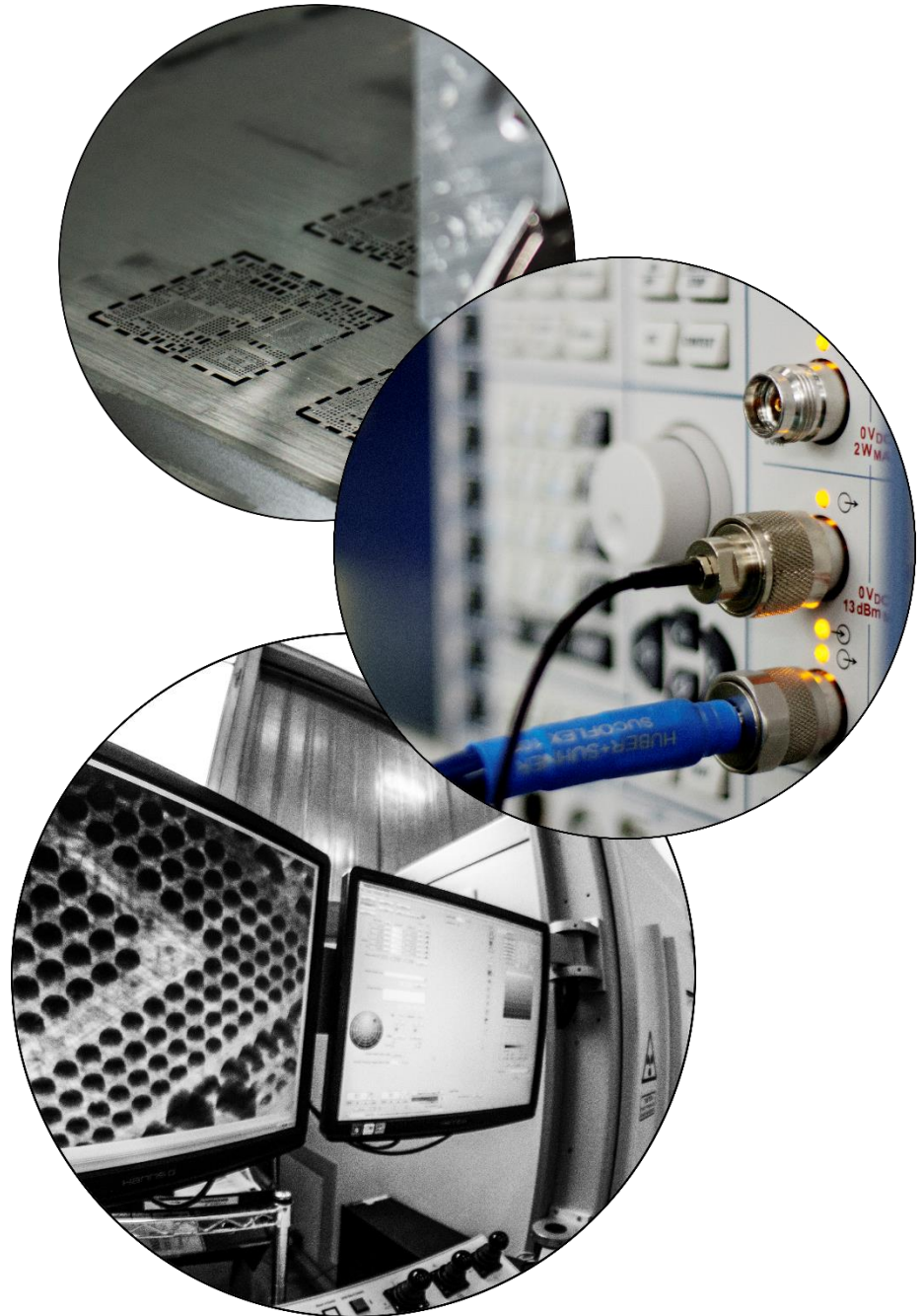
Market Distribution



PRODUCT AND SERVICE

Lean organization for your ideas

- Co-Engineering, Co-Design, Layout Design and Certification.
- Printed circuit board (hybrid circuit, high precision PCB 2-30layers, complex rigid-flex, semi-flex and aluminum).
- Supply chain management, Kan-Ban and Turn-key with full traceability of PCBs, components and single processes.
- PCB Assembly SMD.
- PCB Assembly PTH.
- Custom Screen-Printing Stencil (technology iron photogravure, idro-laser, electroforming and 2D).
- Control printing SPI 3D.
- Baking/Dry Cabinet PCBs and components.
- Pin in Paste.
- Automated Optical Inspection AOI before and after reflow.
- Conventional Reflow, Vapor Phase and Vacuum Vapor Phase ovens.
- Wave and Selective solder.
- Analysis & Inspection X-ray 3D.
- Micro Laser PCB & PCBA depaenelling, scoring, perforation, cutting pad, routing, drilling, desoldering, marking, remarking, rework solder mask, vias.
- Cleaning/Conformal Coating and Potting
- Programming Jig and Functional Testing.
- Final assembly and Box building.
- Cable and Fiber Optic assembly.
- Additive manufacturing 3D professional assistance, sample and production
- ESD packing.
- Service & Repair IPC specialist assembly and rework pcba hi tech



Smart Factory Area SCEN

The plants are located in the Ospo industrial area of Muggia-Trieste, just outside the motorway exit, a few meters from the Italian-Slovenian state border and close to a wildlife park.

Both factories are equipped on all the external cover of photovoltaic systems and internally implemented LED lighting to produce in an economical and eco-sustainable way.

For the complete micro-electronic service, SCEN has developed a Smart Mini Factory subdivided into technological various areas of 500 square meters each, with a total surface area of 5,000 square meters.

Every single area (EPA) has video surveillance access, is protected with termoscanner, RFID pass and tester for the compliance of ESD protections and the environments have the temperature and humidity controlled over some dedicated areas in "cleanroom".

Area19 Reception & Administration.

Area13 Electronic Warehouse & Laboratory HW-SW

Area17 Assembling SMT lines, LASER lines & Quality.

Area15 Assembling PTH lines, Programming & Test ICT

Area21 Mechanical Warehouse & Maintenance.

Area23 Additive Manufacturing & Coating-Potting

Area25 Facility Warehouse & Technical.

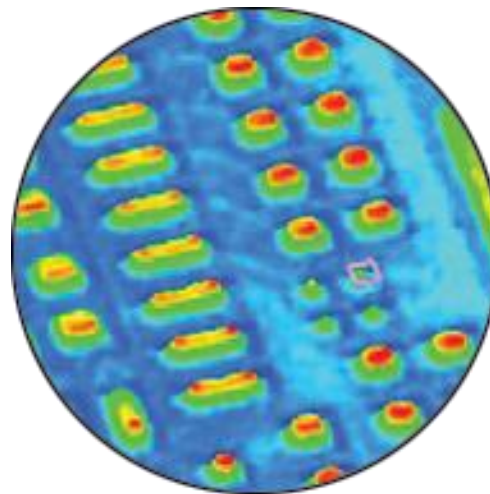
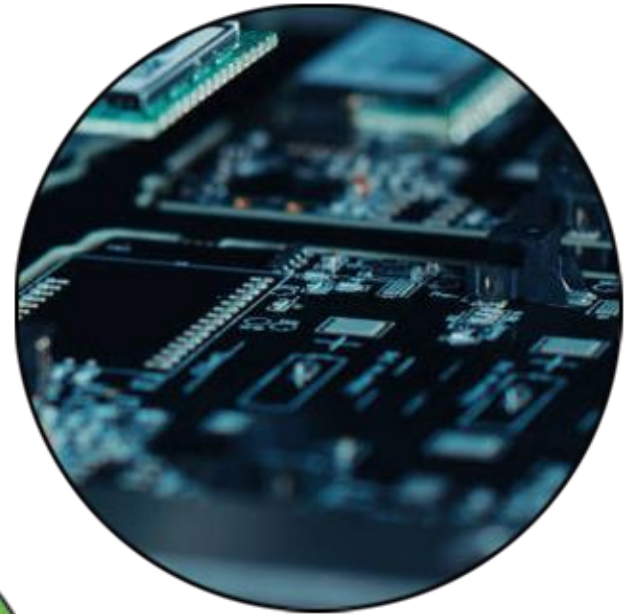
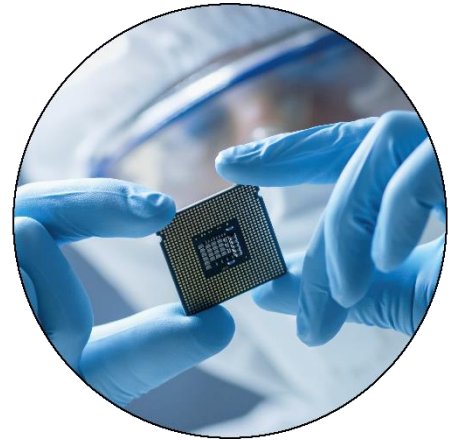
Area27 Assembling Mechanical & Cable .



SCEN[®]
Electronic Manufacturing Service

FACTS AND FIGURES:

- 3 SMT Assembling Lines with two heads each from 90.000 components/hour.
- 3 Air Reflow ovens, 1 Vapor Phase oven and 1 Vacuum Vapor Phase oven.
- 3 Automated Optical Inspection machines and 1 SPI 3D machine.
- 1 X-ray 3D nanofocus machine.
- 1 PTH assembling line with solder wave and selective machine.
- 1 Cable assembling lines with 4 cut and crimping machines.
- 1 Double router depaneling and 2 CNC machines.
- 1 Micro Laser PCB machines for depaneling, cutting, drilling & rework PCBA
- 1 Mechanical assembling line with Coating and Additive Manufacturing.
- 3 Packing lines.
- 39 Employees.
- 610 Customers portfolio.
- 1800 Stakeholders.
- 4000 Different family of products.
- 9000 Collaboration on Projects & Products



TECHNOLOGY

Fine Pitch Array 0.2, μ BGA, Package on Package, CSP, QFP, SMD components from 01005 to 55x55mm, THT, Pin in Paste, Vacuum Solder with Zero Void and special solder processes with Low Temperature.

Production according to IPC A-610G Class II & III.

In-house trainers for IPC A-610E and IPC 7711/7721.

Conformity RoHS III (lead-free) Regulations 2015/863/UE and Reach 19907/2006/UE_SVHC Art. 31 Reg453/2010/UE.

Conformity Regulations ESD CEI-EN 61340-5-1 and IPC –STD-001.

Conformity Conflict Minerals regulations 2017/821/UE and register A.E.E. n° IT18110000010922.

CONTINUOUS IMPROVEMENT

5S INITIATIVES, 6SIGMA, INDUSTRY 4.0, SOCIETY 5.0

- LEAN STRATEGY
- PROBLEM SOLVING
- LAYOUT ADAPTATION
- VISUAL MANAGEMENT
- SAFETY

QUALITY CERTIFICATIONS:

Integrated Management System Quality ISO 9001:2015.

Highly Qualified Research Laboratory PCBA Solder Analytics LR47/1978 capo VII art. 22 co. 2.

“Pending 2021”: Medical ISO 13485:2016

SCEN[®]



For more information visit

WWW.SCEN.IT



Thank you for your attention

SCEN S.r.L cap. soc.500.000,00euro(i.v.)

Via Colombara di Vignano 13, 34015 Muggia, TRIESTE - Italy

VAT: IT 01114100322 - R.E.A. n° 125666 C.C.I.A.A. (TS)

Tel.: +39 040 231 778 – Fax +39 040 232 230

Email: info@scen.it – PEC Email: scensrl@pec.scen.it

agg.210219bed